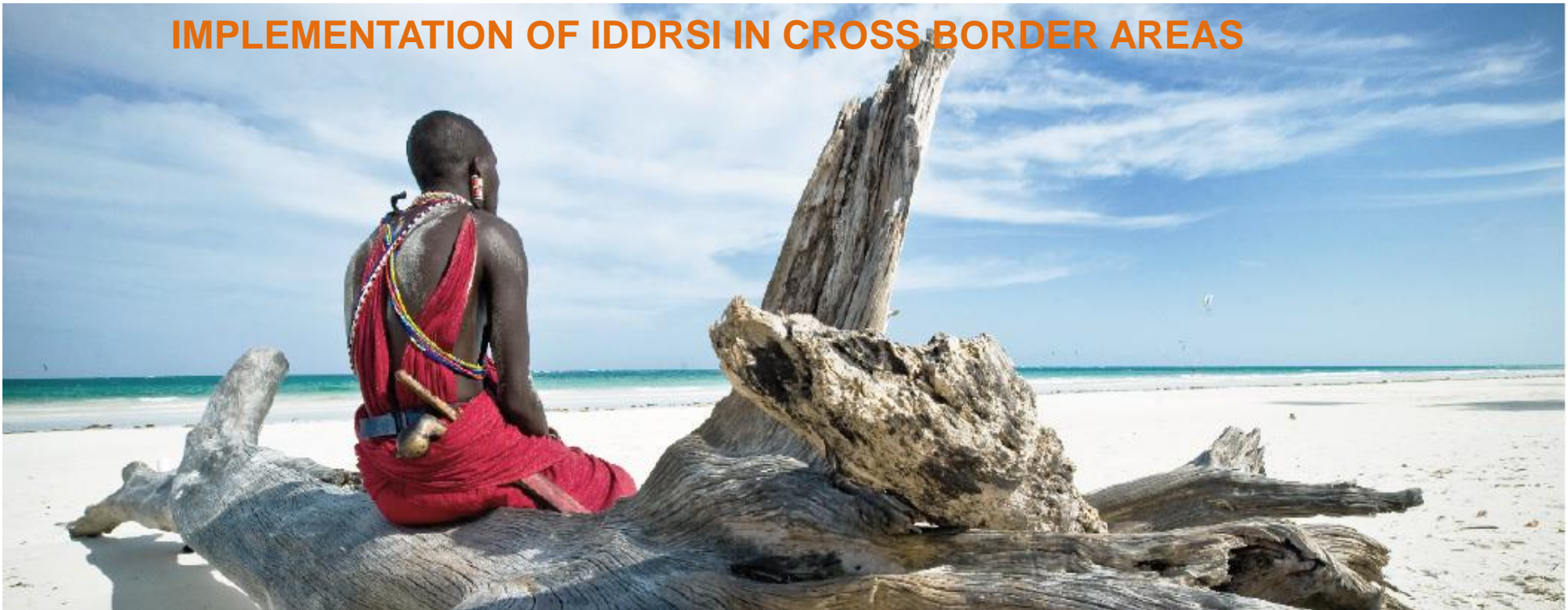




PEACE, PROSPERITY AND
REGIONAL INTEGRATION

11TH IDDRSI PLATFORM STEERING COMMITTEE MEETING (VIRTUAL), 23RD JULY 2020

IMPLEMENTATION OF IDDRSI IN CROSS BORDER AREAS



IDDRSI PROGRAMMING LOGIC MODEL

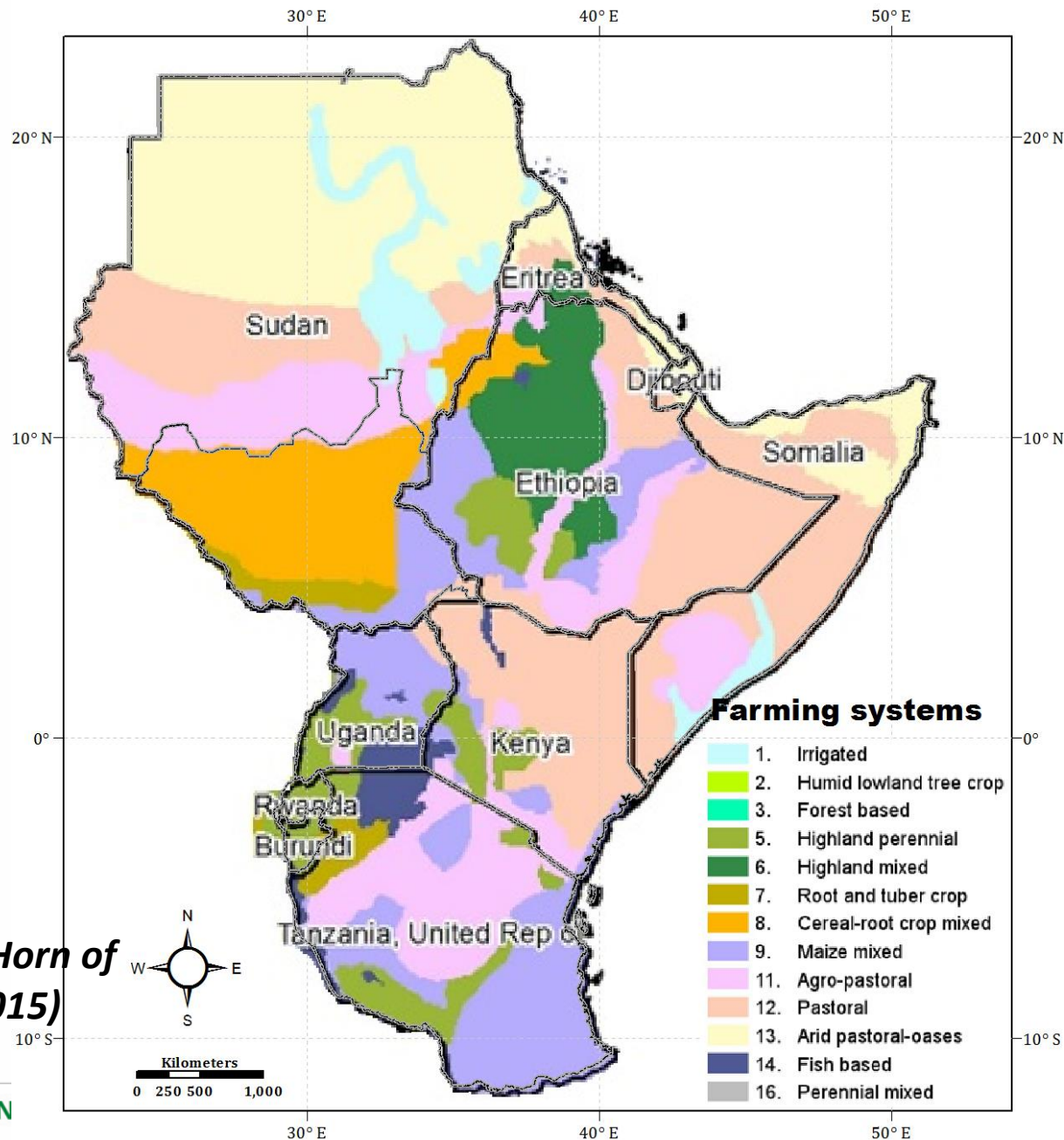


IDDRSI Targets Arid and Semi Arid Lands of the Region

- 70% of the IGAD Region under arid and semi-arid lands.
- Multiple Hazards: Drought, flood, COVID, Locust

Farming and production systems in the Horn of Africa (Source: Redrawn FAO Farming 2015)

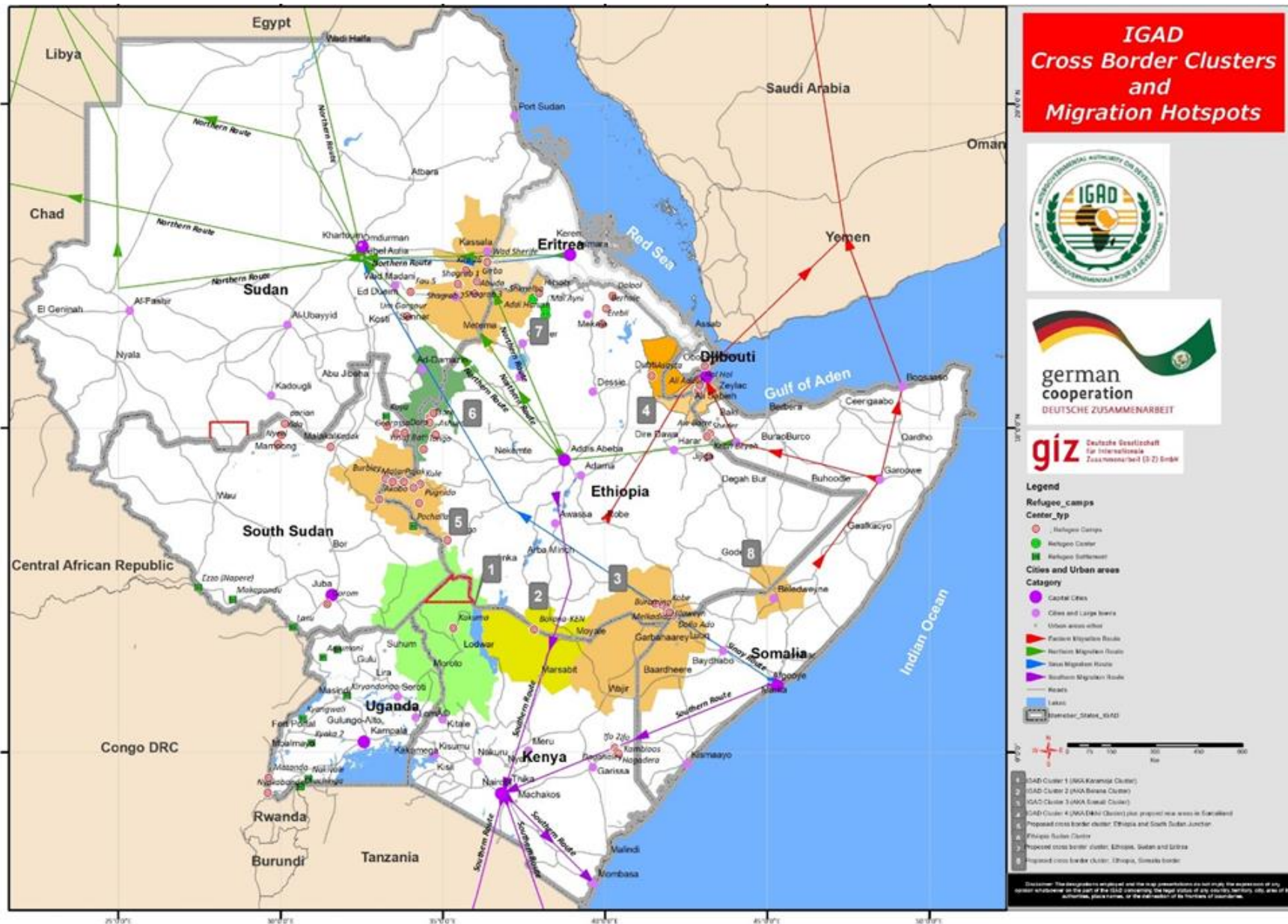
INTERGOVERN



IGAD Cluster Approach

- The cross-border cluster approach helps to promote practical roadmaps to foster a dialogue between stakeholders in order to enable the coordination of mutually beneficial investments across borders.
- The approach will provide a framework for addressing the common context-specific challenges while harnessing the development potential and opportunities across the borders.

IGAD Cluster Approach



Key Features of IGAD's Cluster Approach

1. Consistent with the African Union Convention on Cross Border Cooperation – The Niamey Convention
2. Decentralized coordination unit- Cross Border Development Facilitation Unit
3. Ownership by Member States.
4. Active roles by Member State, IGAD experts and DPs.
5. Multiple level of participation and ownership



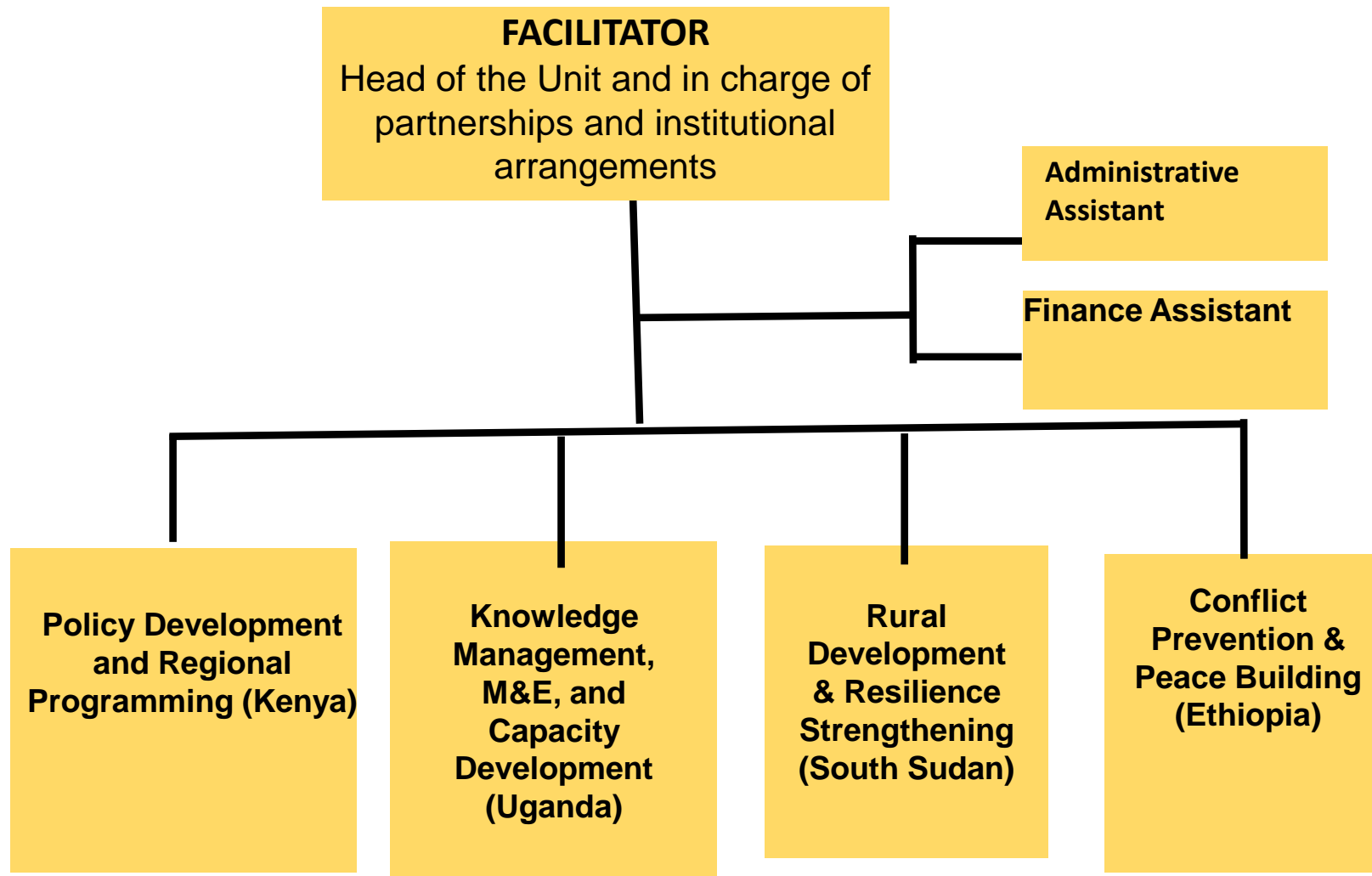
CBDFU – Moroto Office

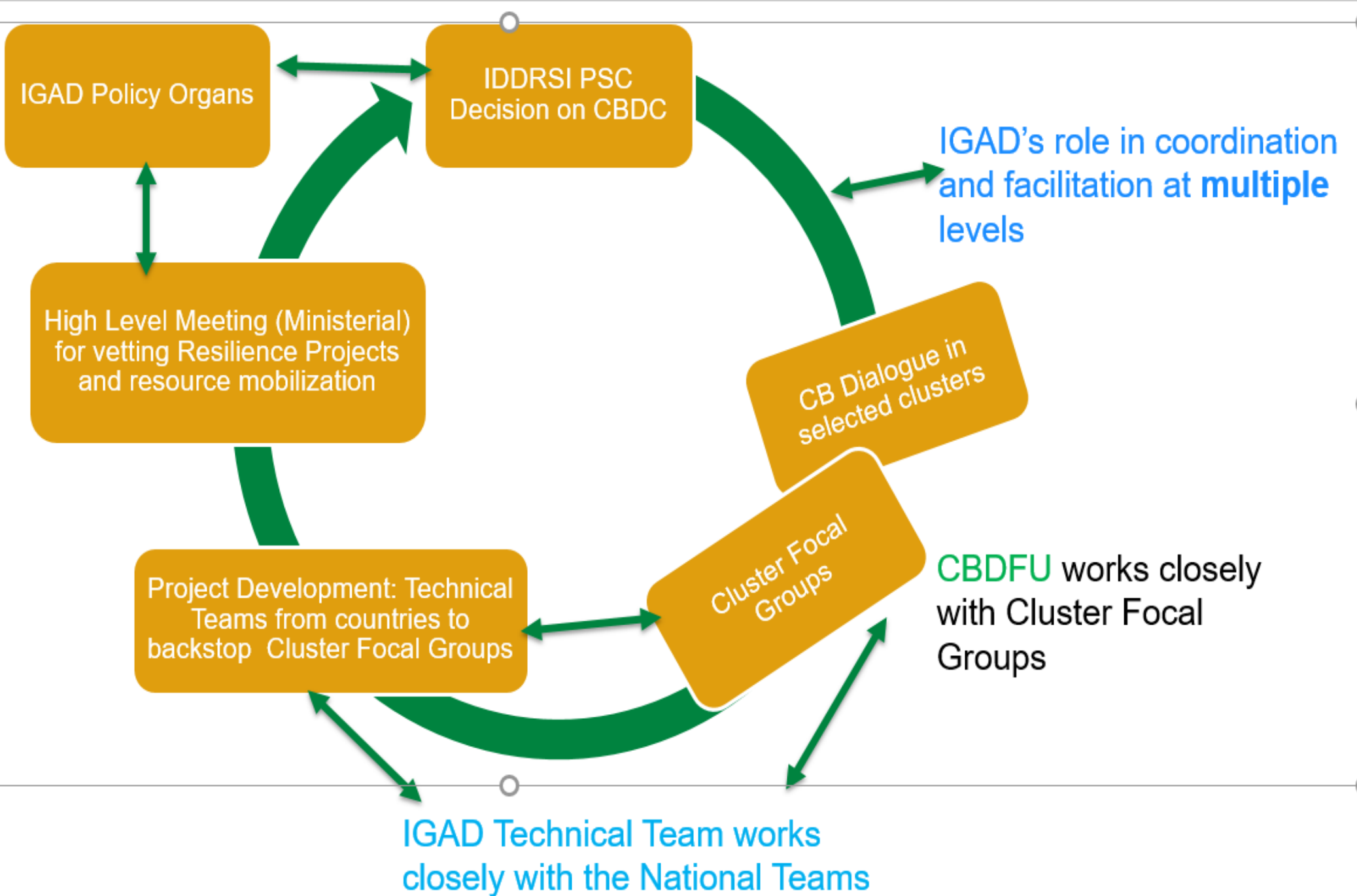
CROSS BORDER DEVELOPMENT FACILITY UNIT (CBDFU)

- CBDFU was launched on July 26, 2018 by Ministers of Resilience in four countries of the Karamoja Cluster (Kenya, Uganda, Ethiopia and South Sudan).



Functional Structure of the Cross Border Development Facilitation Unit (CBDFU)





PRIORITY INTERVENTION AREAS FROM CBD

Clusters	Priority Intervention Areas Identified Resilience Project				
IGAD Cluster 1 (Atekir)	Peace and Security	Water Development and Management	Sustainable management of rangelands and pasture	Livelihoods, livestock production and health	Access to social services (health, education, market, and roads).
IGAD Cluster 4 (Dikhil)	Natural Resource Management (water and rangelands mgt)	Enhanced Production and Livelihoods Diversification	Access Basic Social Services (clean water, health, education, Markets	Peace and Security	
IGAD Cluster 2 (Mar-Moy)	Natural resource development (water and pasture),	Water infrastructure	Peace and Security		

Key Achievements

- Through the Cluster Approach IGAD has established a grassroots network for a bottom up resilience programming at cluster level (Community Dialogue, Cluster Focal Group and National Experts).
- Improved collaboration of IGAD units in resilience programme with Member States in partnership with DPs.
- Piloted CBDFU to institutionalize resilience building at local level.
- Successfully translated IDDRSI/CPP at Cluster level by developing community priorities into resilience programme document.

Key Achievements

The IGAD Cluster 1 (Atekir Cluster): Community Dialogue identified priority intervention area.

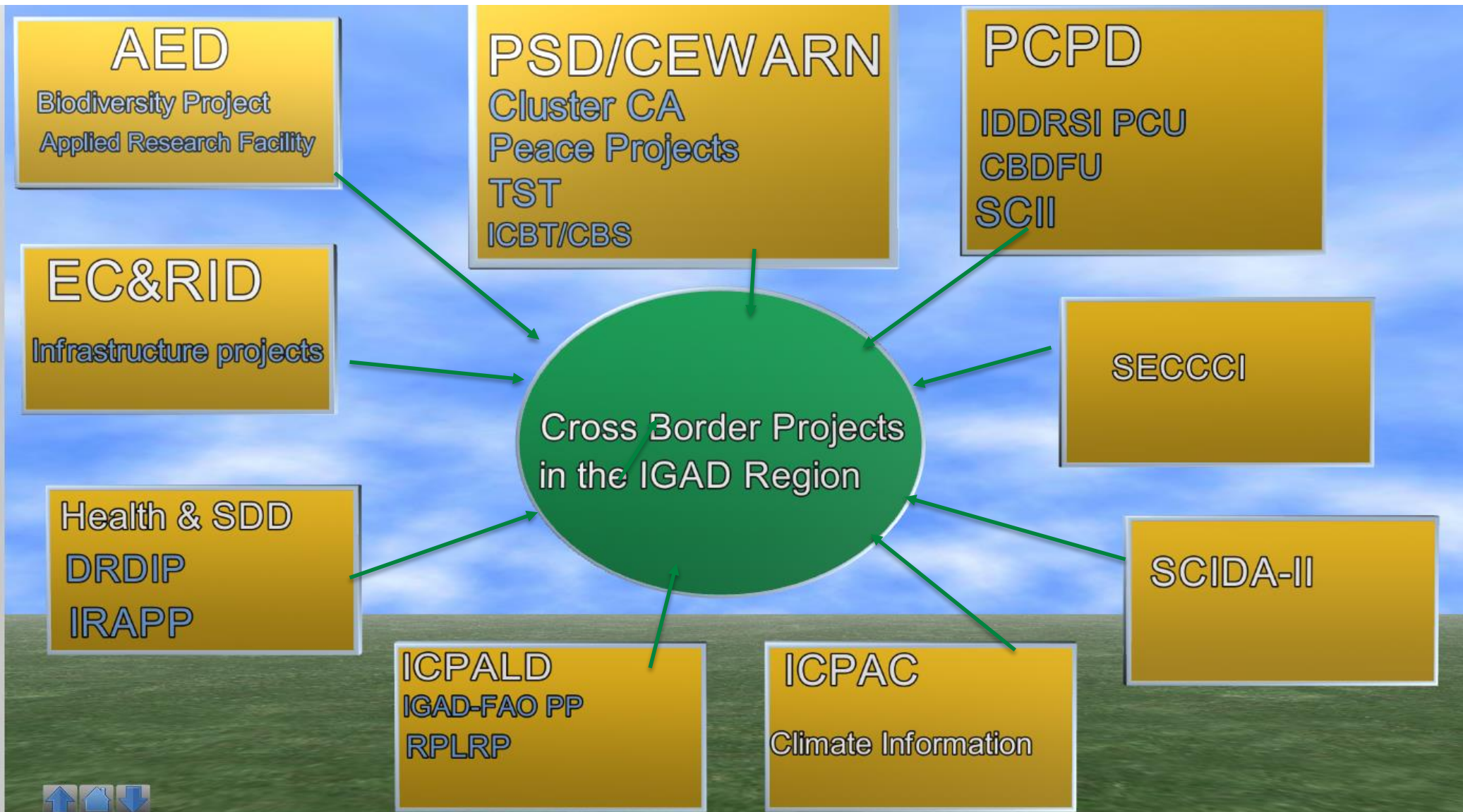
The final draft document was presented at the Ministerial meeting on 11 March, 2020 and launched for fund mobilization and preparation of implementation plan.



Key Achievements

- The IGAD Cluster 4 (Dikhil Cluster): Priority intervention areas were identified at the community dialogue.
- The Programme Document is currently under review by the National Experts and Cluster Focal Group Representatives.
- Preparation of IGAD Cluster 2 (Marsabit-Moyale) Resilience Programming Document is at advanced stage.

Overview of Cross Border Projects in the IGAD Region



Rethinking about Coordination of Cross Border Projects

- Despite the implementation of cross border projects by all IGAD Divisions and Specialized Institutions, so far there is no common Coordination Mechanisms within IGAD.
- Therefore, it is a high time that we in IGAD rethink about a holistic coordination mechanism for cross border cooperation.
- Such measure will also be instrumental in the realization of the AU policies and programmes, such as the AU Niamey Convention.



PEACE, PROSPERITY AND
REGIONAL INTEGRATION

THANK YOU

