



IGAD

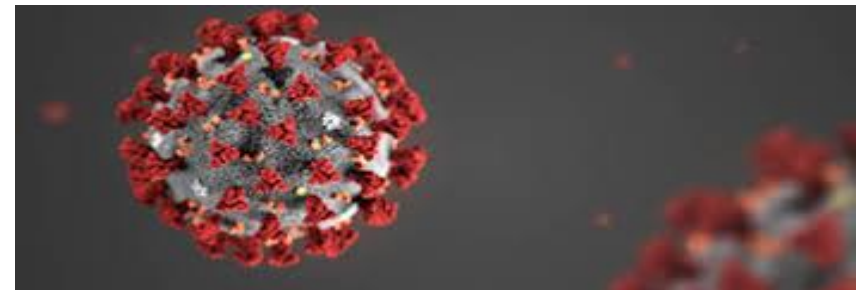
IGAD COVID-19 RESPONSE STRATEGY

IDDRSI SC

SOCIAL DEVELOPMENT DIVISION

23RD July , 2020

"No country is safe until every country is safe"



IGAD COVID-19 RESPONSE STRATEGY

- **THE BACKGROUND**

IGAD MEMBER STATES POLITICAL AND TECHNICAL LEADERSHIP STRATEGY FOR COVID-19

IGAD COVID -19 response is informed and anchored by the following

- 1. IGAD Special Taskforce on COVID-19 Pandemic (15th March, 2020)**
- 2. Declaration of the Heads of the State and Government (30th March, 2020)**
- 3. Call for Action from Ministers of Health (08 April, 2020)**
- 4. Call for Action from Ministers of Finance (09 April, 2020)**
- 5. Development of Health Response Strategy (20 April, 2020)**
- 6. IGAD member states Disease surveillance and response steering committee established in June 2020**

IGAD COVID-19 RESPONSE STRATEGY

Goal. Reduce incidence, morbidity and mortality associated with COVID -19 in the IGAD region.

Objectives

1. To promote regional coordination in preventing and responding to the COVID-19 pandemic.
2. **Address the vulnerability of IDPs, refugees, migrants and mobile cross border communities**
3. **Enhance the capacity of cross border facilities to prevent and manage the COVID-19 pandemic**

Strategic Interventions of the Strategy

1. **Strengthen the regional and cross border collaboration and coordination**
2. **Support scaling up national response capacity to detect and manage COVID-19 outbreak**
3. **Protect vulnerable populations such as refugees, IDPs, migrants and other special populations at cross border and host communities**
4. **Improve knowledge management, innovation and capacity building for supply chain management including digitalization of the response**

IGAD COVID-19 REGIONAL PLAN OF ACTION

Major Actions in the COVID-19 emergency plan

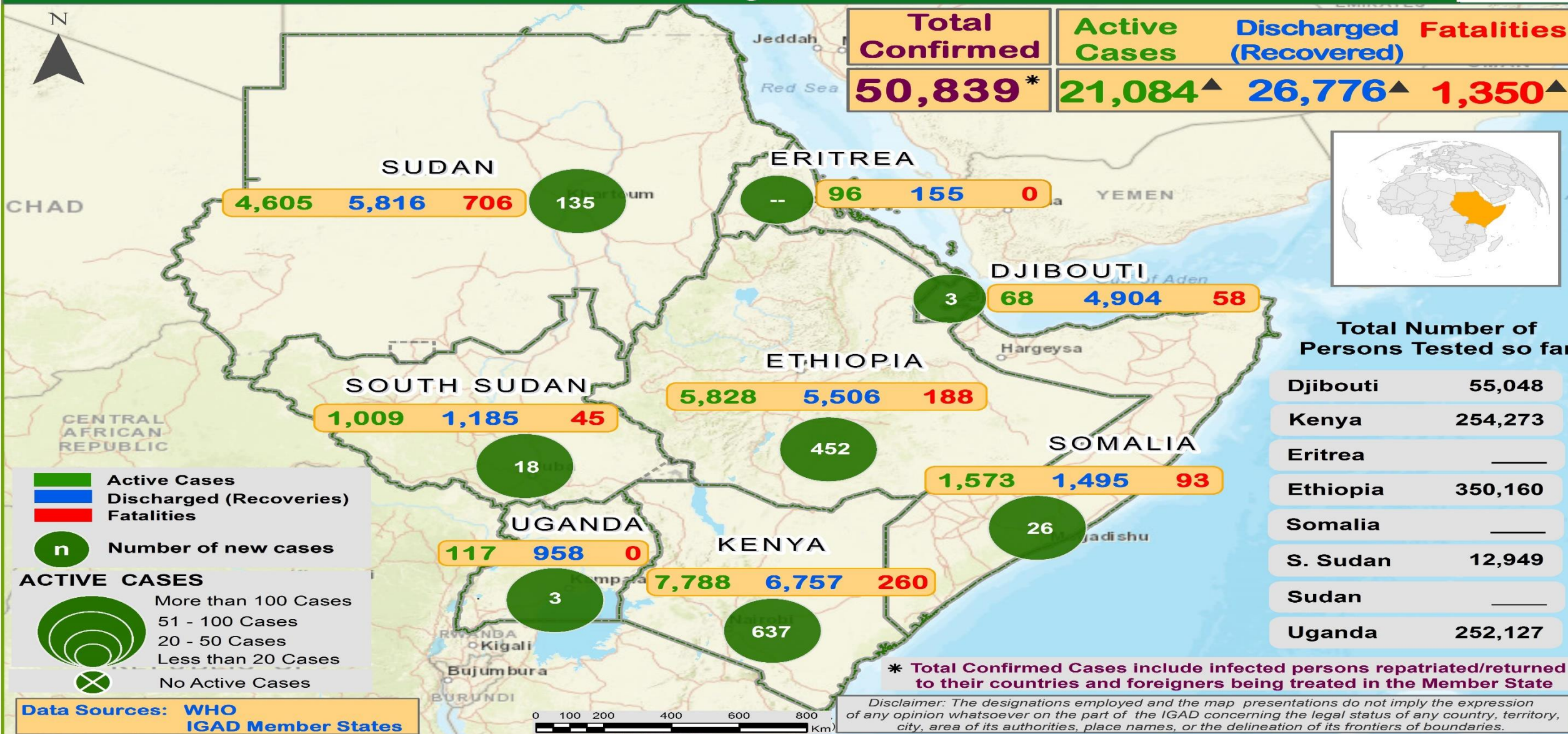
- ❖ Strengthen coordination between regional and national COVID-19 Taskforces
- ❖ Protect and motivate frontline workers and vulnerable CBMPs from COVID-19 infection in cross-border areas across MS
- ❖ Improve capacity of selected facilities to movement of COVID-19 clients/cases who would require emergency referral for critical care from lower facilities to higher level facilities
- ❖ Improve capacity of laboratory facilities to collect and refer samples to allow rapid detection of COVID-19 cases;
- ❖ Improve surveillance among pastoralist, Refugees, IDPs, Migrant and cross-border communities in order to control sporadic cases;
- ❖ Clusters and prevent community transmission at cross-border areas through rapid and coordinated contact tracing and isolation;
- ❖ Enhance knowledge of the cross-border communities to prevent and suppress community transmission of COVID-19 through hand hygiene and individual/population level physical social distancing.

THE SITUATION OF COVID-19 CASES IN THE REGION

IGAD Member States : Novel Coronavirus (COVID-19) Situation



22nd July, 2020



Data Sources: WHO, IGAD Member States

* Total Confirmed Cases include infected persons repatriated/returned to their countries and foreigners being treated in the Member State

Disclaimer: The designations employed and the map presentations do not imply the expression of any opinion whatsoever on the part of the IGAD concerning the legal status of any country, territory, city, area of its authorities, place names, or the delineation of its frontiers of boundaries.

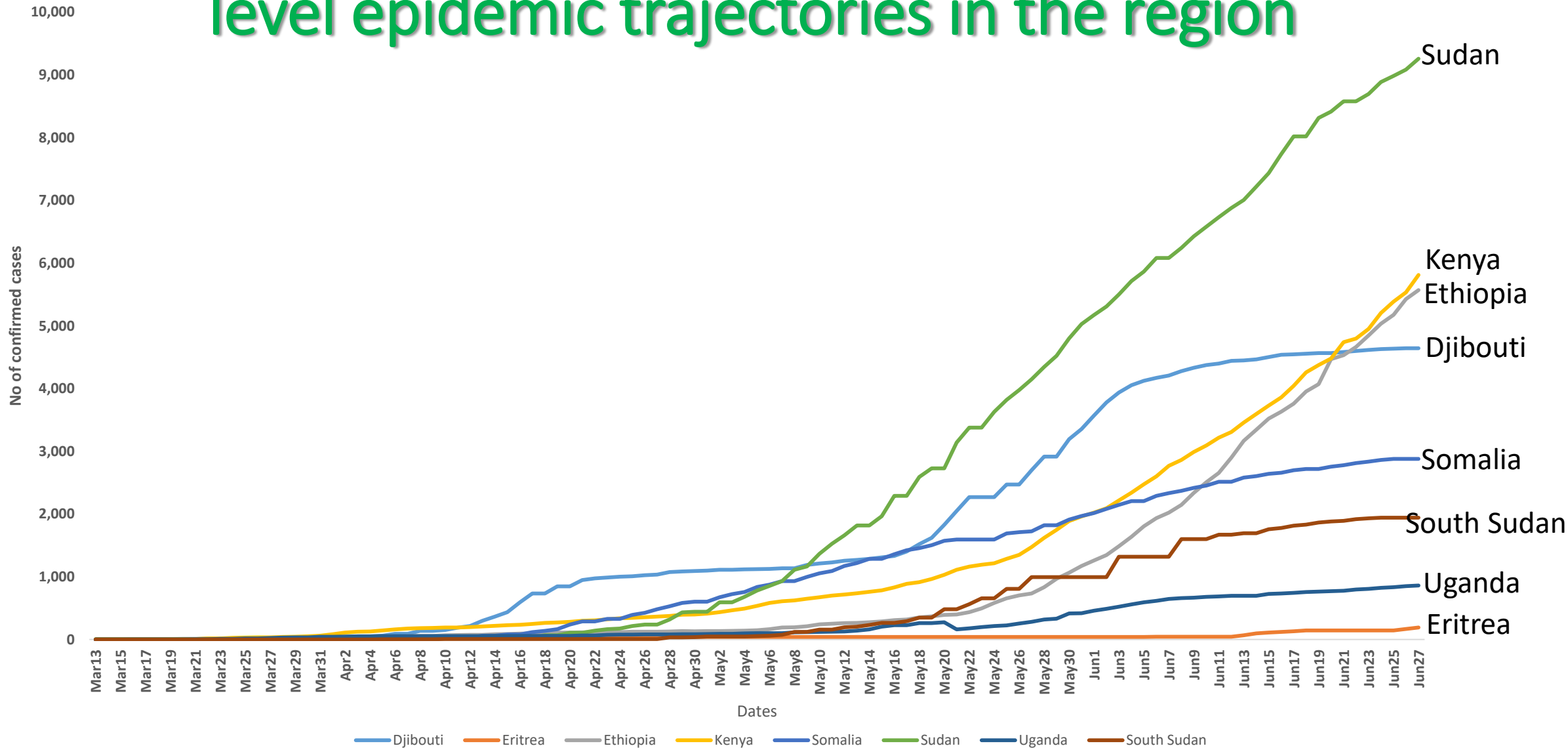
IGAD REGION TRENDS AS AT 22ND JULY 2020

- Generally there is a **rapid increase in the number of confirmed cases, recoveries and deaths**. The active cases are still high thus the curve is yet to flatten
- Increase in the confirmed cases is due **to scale up of testing across the countries**. The scale up has been characterized **by increase in number of laboratories and decentralization** of testing services across the MS .
- There has been **easing of lockdown measures in some countries** resulting to disregard of some of the containment measures and therefore increase in community infections
- As at 22nd July 2020, Total confirmed COVID 19 positive cases were **50,839** , out of which **26,776** patients recovered and **1,350 fatalities**
- **Sudan, Kenya and Ethiopia** have been reporting the highest number of active cases but also deaths within the region
- **Uganda and Eritrea** have registered lower cases respectively compared to other countries

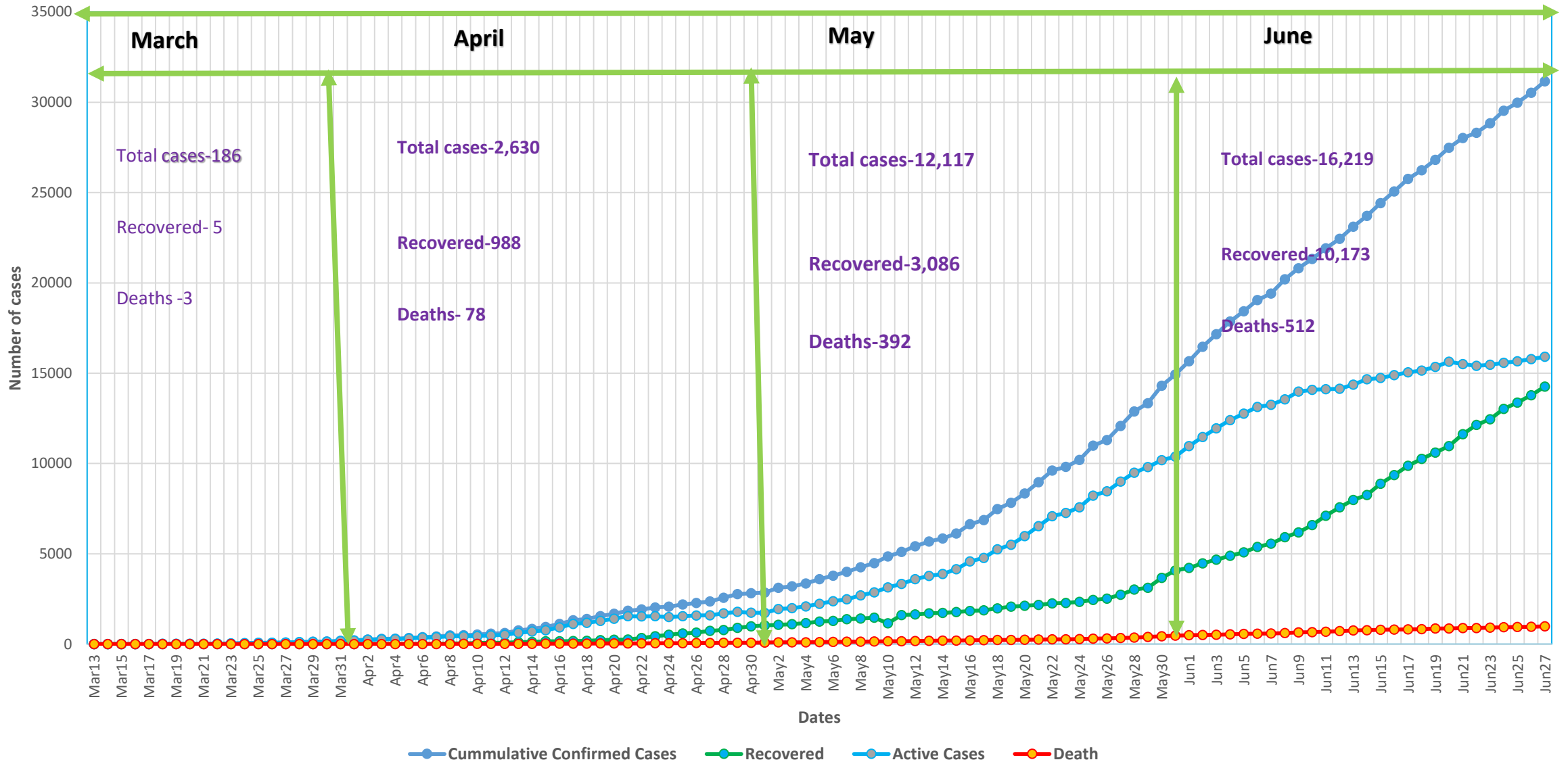
Generally

- The COVID-19 pandemic in IGAD region is still in the early stages compared to other regions in the continent and even Globally
- IGAD member states need to learn/ apply the right measures to scale up their response to the pandemic.
- The number of cases and deaths are still low allowing the health system to absorb the shock, though the systems are starting to feel the pressure
- There is need to intensively continue the preventive measures to flatten curve and control the pandemic.
- COVID-19 response multi stakeholder approach (**community, religious** leaders, **government** both **national and sub national** private sectors, civil society organizations, donors and development partners at regional and national level)

Member states level epidemic trajectories in the region



Evolving trend of cases in IGAD region



Key interventions to flatten the curve amongst Member States in progress

- ❑ **Ministry of health intensively focused on**
 1. **Delaying the virus spread, limit community transmission**
 2. **Reduce its impact on health systems and economies through appropriate containment and mitigation measures**
 3. **Support testing capacity for rapid diagnosis of COVID-19 cases**
 4. **Train the front-line workforce on active surveillance, case detection and contact management**
 5. **Improve information and data sharing including innovation and research**

- ❑ **Social distancing measures enforced, including ; curfew, banning of mass gatherings, closure of public spaces, closure of educational institutions, partial lockdowns and cessation of movements in some counties**

- ❖ **Wearing of masks, sanitizing and infection control measures enhanced**

- ❖ **Scaling up laboratory testing, case management, quarantine facilities and contact tracing**

- ❖ **Strengthening local governments capacities and resources mobilization for the response.**

- ❖ **Leveraging on the Community Health Strategy** (Use of Community Health Volunteers) for contact tracing and raising awareness on COVID-19

- ❖ **Restriction of movement of truck drivers- testing and movement only allowed with negative Covid-19 Results**

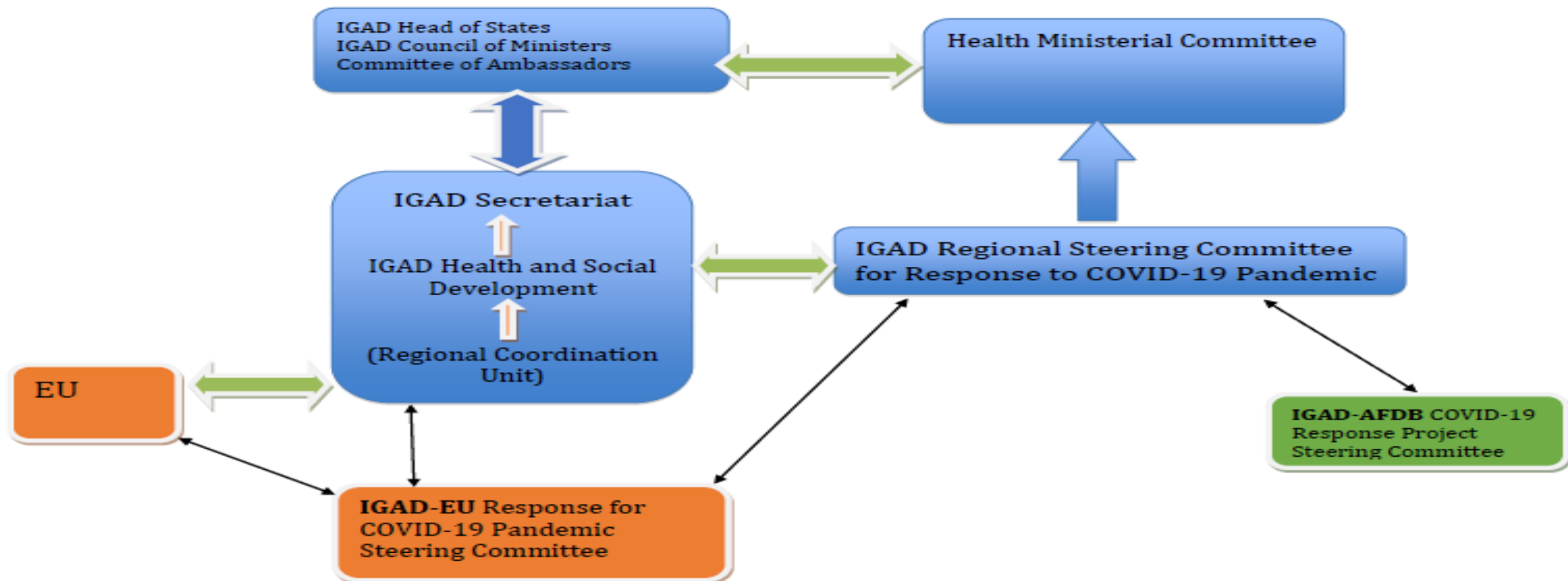
- ❖ **Risk Communication and Community Engagement (RCCE); enhancing awareness on COVID-19**

IMMEDIATE/RAPID RESPONSE FROM IGAD MS & SECRETARIAT

- ❑ **Despite the numerous challenges of the pandemic in the region all IGAD Member States National response committees continued to put in remarkable efforts to contain and control the pandemic.**
- ❑ **Increase in MS investments on strengthening health systems and reducing the social economic impact of COVID-19**
- ❑ **IGAD Staff donated 700.000 USD to its MS and Handed over of Supplies worth 175,000 USD to all Members State's selected cross border sites**
- ❑ **MS have boosted their capacity to conduct mass testing and continue to prevent community transmission at national borders through a rapid and coordinated contact tracing and isolation system**
- ❑ **Increased public awareness on preventive measures and enforcement of the same measures**
- ❑ **Designated IGAD Covid-19 Response team continue to support MS Response with a robust information dissemination to /from MS and partners**

IGAD DISEASE SURVEILLANCE AND RESPONSE GOVERNANCE STRUCTURE –established

Overall IGAD Governance Structure

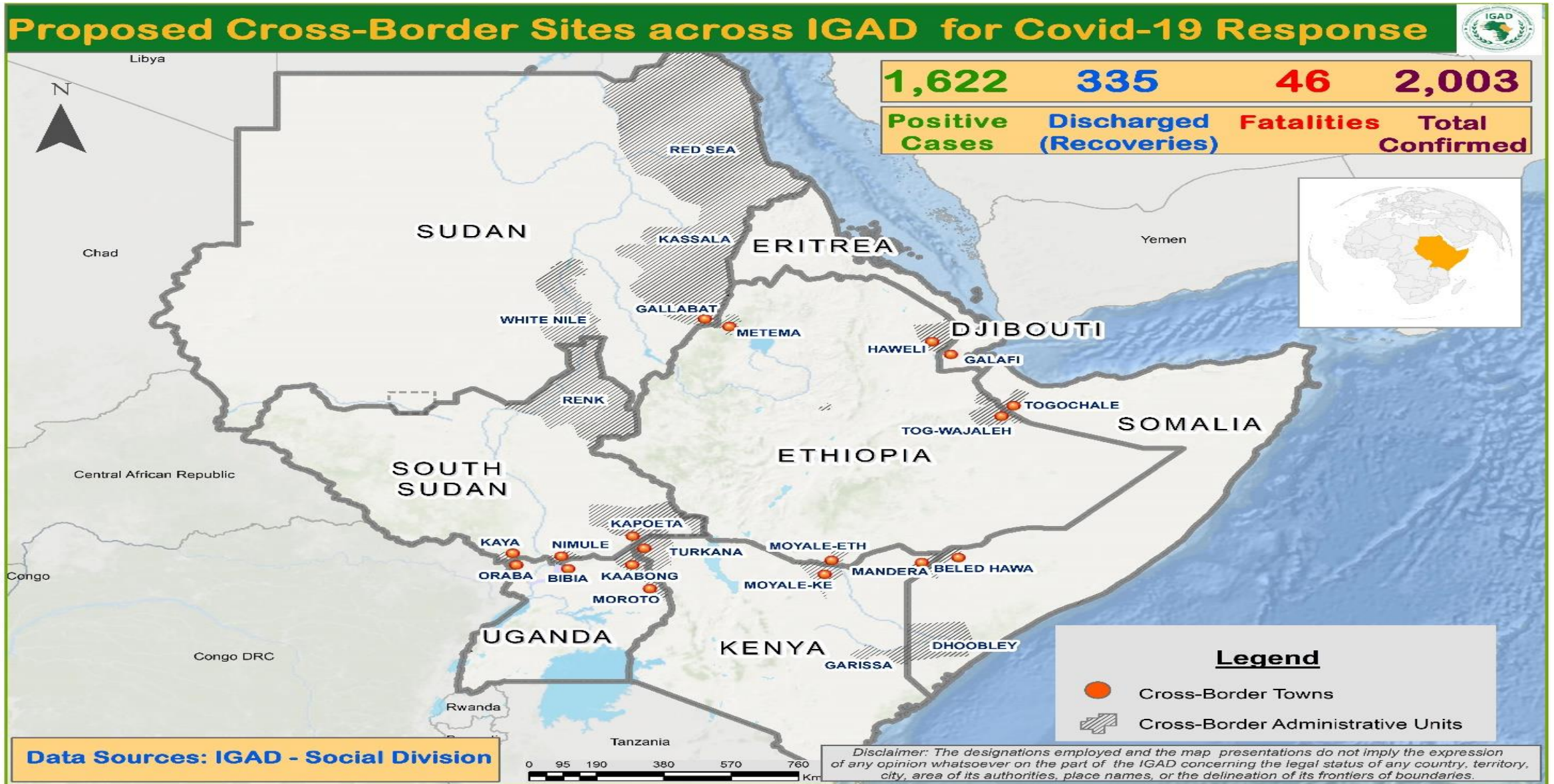


IGAD Health Emergency Trust Fund (IHETF)

- IGAD HETF assessment report completed
- Internal revision for the report finalized
- Report to be shared with countries this week
- Validation workshop being organized
- Endorsement is envisioned by Ministers of Finance and Health

- **FOCUSED SUPPORT TO
CROSS BORDER AND
MOBILE POPULATIONS**

Major Cross Border Areas a cross the MS



Selected/priority Cross Border sites across

Countries	No of sites		Cross border Sites					
Djibouti	5	Loyada	Galafi	Ali Sabeh/Galilo	Dora/Tadjoura	Obock		
Ethiopia	6	Humra	Haweli	Metema	Togochale	Moyale	Kurmuk	
Sudan	9	Hamdaet	Kurmuk	Abu Jabeeha	Galabat	P. Sudan	Jodah	Other 3 sites with Egypt and Tchad and Libya)
S. Sudan	6	Nadapal	Unity	Kaya	Nasser	Nimule	Renk	
Uganda	9		Busia	Elegu/Gulu	Oraba	Malaba	Moroto	Other 4 sites with (DRC,TNZ,Rwnd and
Kenya	7	Taveta (TNZ)	Busia	Mandera	Moyale	Malaba	Wajir	Lokchogi/Turkana
Somalia	6	Mogadishu	DIIF	Balad Hawa	Toga-wajale	Berbera	Lowyada	Hariirad
Somalia	4		Dollow		Bosaso	Garowe		
Total	54							

Selected /Priority Selected IDP Camps

Country	Number of the camps/settlements	Estimated refugee population (Million)	Priority camps
Djibouti	3	3.	Merkazi
Ethiopia	26	0.9	Gambela
Kenya	3	0.476	Dadaab
South Sudan	9	0.3	Refugee camps in Maban area (Yusuf Batil)
Somalia	3	0.033	(Mogadishu refugees and IDPs)
Sudan	15 (+5 in new areas in Kordofan, Darfur)	1. Million	White Nile camps
Uganda	12	1. Million	Adjumani
Total	71	4.139	

selected/priority Migration Response Centers (MRCs)

Country	MRC	Registered number of Migrants in 2019
Djibouti	Obock	3797
	Masgara	800
	Loyada	252
Ethiopia	Semera	1544
	Metema	1710
	Dire Dawa	1,770
	Togochale.	267
Somalia	Hargeisa	1256
	Bosasso	3222
Sudan	Gadaref	
	Khartoum	79
Total		

SUPPORT FROM IGAD PARTNERS

EU SUPPORT

The project “EU response to the Health and Socio-Economic impact of COVID-19 in the IGAD REGION” (RSO/FED/042-795)

☐ 3 months emergency action plan with EU support to cross border, refugees and migrants completed

• **EU Support focused on Four major Components :**

1. Increased capacity at IGAD to coordinate national responses
2. Increased access to health and socio-economic support for vulnerable groups (migrants, refugees, Internally Displaced Persons;
3. Borders and critical supply chains are safe for trade
4. Digital solution relevant for the COVID health response promoted

Progress on the EU support -

- ☐ Finalized and placed the order for the procurement of the PPE, 24 Ambulances, 8 Mobile labs, 105 Infra-red Thermometers and 10,000 testing kits for each country
- ☐ The procurement budget of the above lists is about \$13.5 Million
- ☐ The quarantine facilities will be constructed in selected cross border sites
- ☐ Human resource Support to Regional (IGAD) national and cross border sites(MS)
- ☐ The recruitment of the staff for the Regional Coordination Unit and MS in final stages
- ☐ Project Management structure in place
- ☐ Regional disease surveillance governance structure including Covid-19 established

SUPPORT FROM IGAD PARTNERS

EU Reallocation to COVID-19

- **7 Million EUROS from IPPSHAR funds reallocated to COVID -19 response**
- **Advance discussion in progress between the EU and IGAD on providing 2 million to support South Sudan COVID-19 response**

SUPPORT FROM IGAD PARTNERS

- The AfDB support to 3 month emergency action plan finalized**
- 3 major Components:**
 1. Containing the Spread of COVID-19
 2. Strengthening regional coordination and surveillance systems
 3. Project management and regional coordination

Progress on the AfDB SUPPORT

- Agreement with the AfDB finalized
- IGAD supporting the coordination of the regional funds.
- Supported focused on strengthening sustainable regional surveillance including digitalization of systems
- WHO is the executing the service delivery component for containing the COVID-19 in both IGAD and EAC
- Regional response activities based on IGAD priorities

SUPPORT FROM IGAD PARTNERS

3. Sweden: Support to IGAD for COVID-19 PANDEMIC CRISIS:

- **Funding:** \$300,000
- **Three components :**
 1. Support to National COVID-19 Taskforces
 2. Support to vulnerable population in the region
 3. Support to IGAD Special Task force for COVID-19

Through the support received from the Sweden, IGAD donated large quantity of PPE including disinfectants and sanitizers and donated to selected border across the IGAD countries

Next Steps of the IGAD Health Response Strategy for COVID-19

Continued investment by MS and Development partners on

- ❑ Strengthening National and regional Health systems
- ❑ Boost the capacity of the regional disease surveillance, early warning and response systems
- ❑ The IGAD COVID-19 Strategy to **complement other Diseases outbreak** Response plans (National and Regional)
- ❑ IGAD governance (**SC & TWG**) on disease surveillance and response strengthened

Next Steps of the IGAD Health Response Strategy for COVID-19

- **Operationalization of the IGAD Health Emergency Fund including resource mobilization for the fund**
- **Start implementation of the AfDB project**
- **Establishment of National coordination platform for the EU and Afdb project implementing partners**
- **Finalize discussion with EU to support South Sudan from IPPSHAR funds**
- **Explore additional resources** for the response to COVID-19 pandemic and other similar outbreaks from the **IPF** to:
 - Respond to COVID-19 emergencies at short and medium term
 - Prepare for recovery of the Health System including surveillance

Partner in the implementation of IGAD Health Response Strategy for COVID-19

- IGAD Member States
- UN agencies (**UNOPS, UNICEF, IOM, UNHCR, WHO, ILO**)
- GIZ
- Trade Mark East Africa
- EU
- AFDB
- SWISS
- NORWAY
- REC(EAC)
- Communities



Thank you for your attention

