



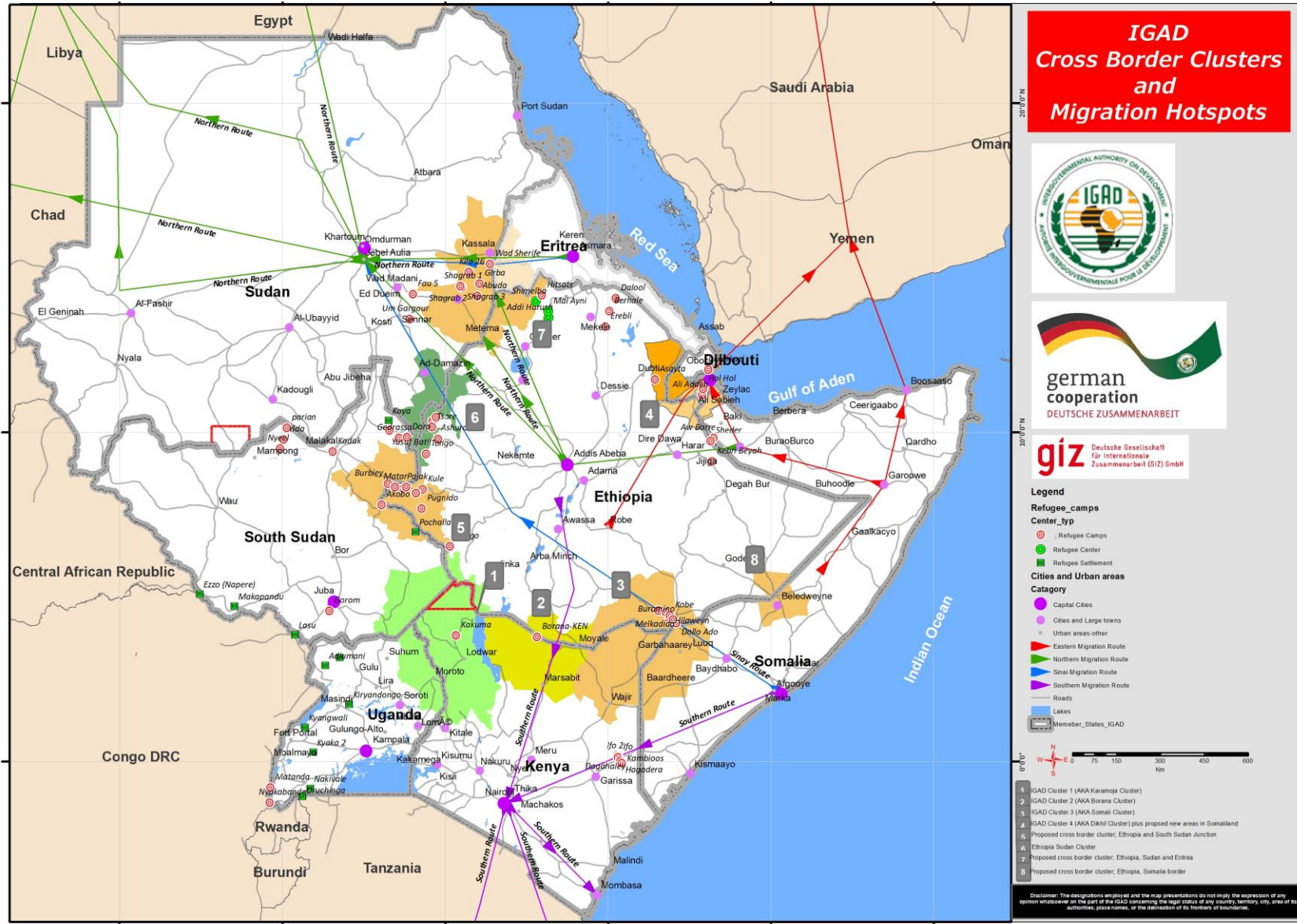
PEACE, PROSPERITY AND
REGIONAL INTEGRATION

**IGAD DROUGHT DISASTER RESILIENCE & SUSTAINABILITY
INITIATIVE (IDDRSI)
PLATFORM STEERING COMMITTEE & GENERAL ASSEMBLY
MEETINGS**

**STRENGTHENING RESILIENCE IN CROSS BORDER AREAS
EMPLOYING THE CLUSTER APPROACH**

**18 – 19 MARCH 2021, SAROVA HOTELS, MOMBASA, KENYA
& ONLINE**

IGAD CLUSTER APPROACH



IGAD CLUSTER APPROACH

Key features of the IGAD cluster approach:

Consistent with the African Union Convention on Cross Border Cooperation – The Niamey Convention

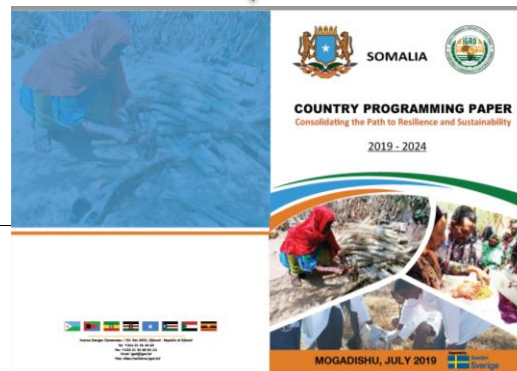
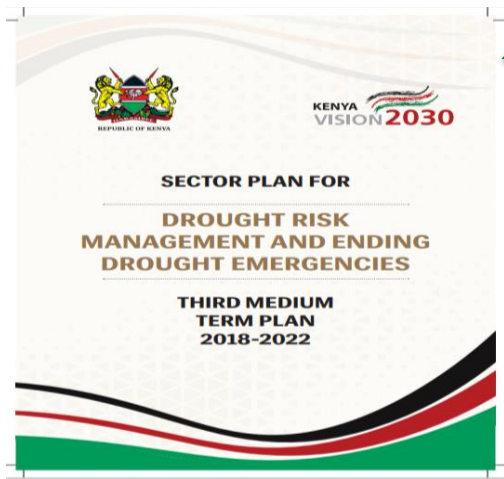
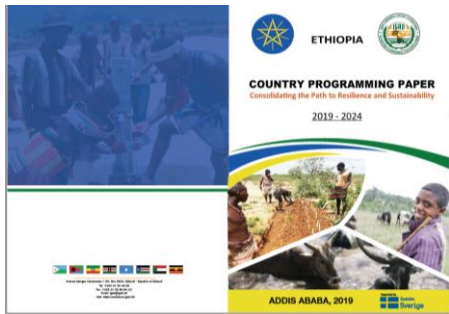
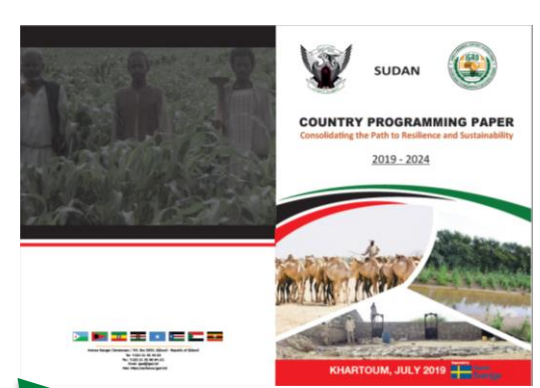
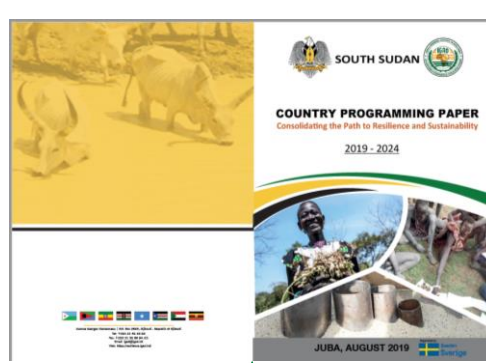
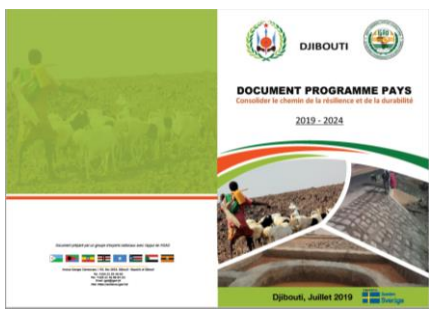
Decentralized coordination unit-
Cross Border Development Facilitation Unit

Ownership by Member States

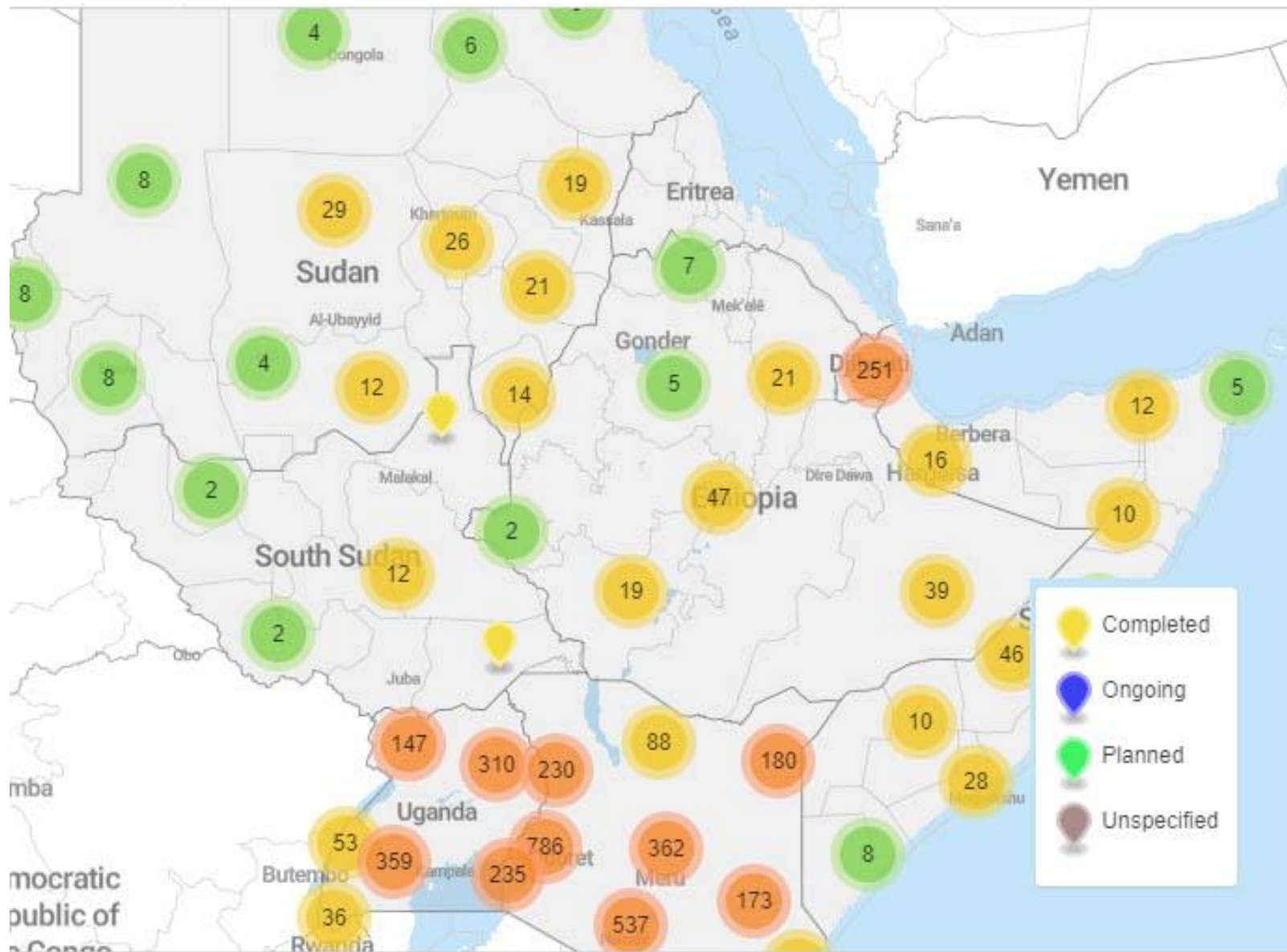
Multiple level of participation: These are at community level, local and national experts, and regional experts from IGAD and Development partners.

IGAD CLUSTER APPROACH FOLLOWS THE IDDRSI FRAMEWORK





Regional Project List



RPLRP BACKGROUND

- Regional Pastoral Livelihoods Resilience Project (RPLRP): collaborative effort (3MS, IGAD and WB) in planning, execution and monitoring,
- Target: AP&P in cross-border areas,
- The Project countries: **Kenya, Ethiopia and Uganda**
- Funding: the government through loan from the World Bank
 - **Loan amount: \$192m (Ethiopia \$75m, Kenya \$77m, Uganda \$40m) and IGAD grant value of \$5m**
- Project Period 2015 - December 2021
- Fund disbursement: 90-100%

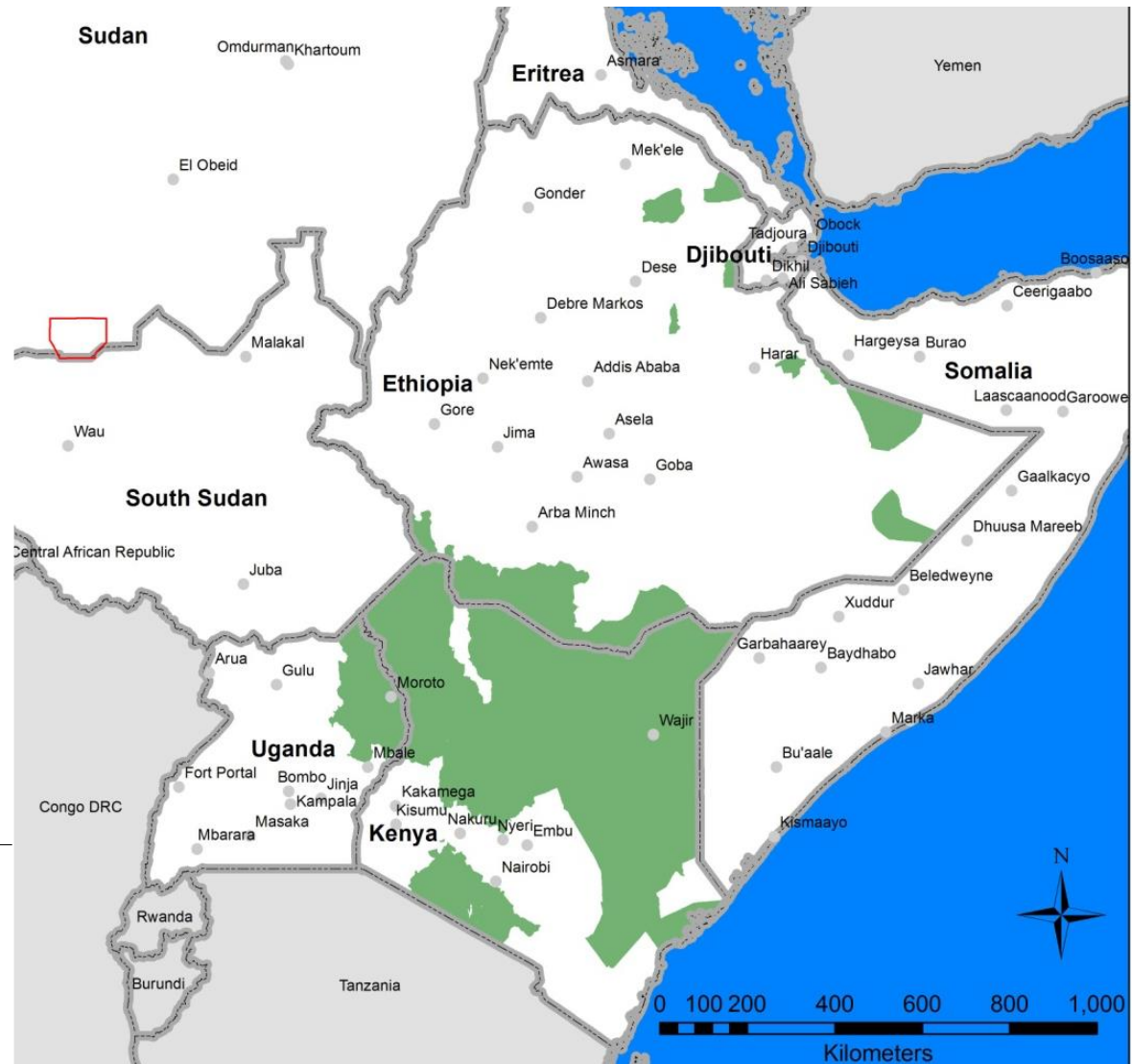


RPLRP BACKGROUND

Ethiopia: 21 Woredas (in 4 Regional States)

Kenya: 14 Counties (23 counties)

Uganda: 12 Districts (XX)



RPLRP BACKGROUND

Components

1. Natural Resources Management (NRM)

- 1.1 Water Resources
- 1.2 Pasture/Land Development
- 1.3 Secure Access to NR in ASALs

2. Market Access and trade (MAT)

- 2.1 Marketing Infrastructure
- 2.2 Value chains & Support livestock Mobility

3. Livelihood Support (LS)

- 3.1 Livestock Production and Health
- 3.2 Food & Feed Production
- 3.3. Livelihood diversification

4. Pastoral Risk Management (PRM)

- 4.1 Pastoral Early Warning and Response
- 4.2 Climate Risk Management

5. Project Management and institutional support

- 5.1 PM, ME&L, KM, Communication

- 5.2 Regional and National Institutions Support

OUTPUT LEVEL ACHIEVEMENT

- **365** Water Infrastructure Developed or in process of completion by project end
 - **33** of which are cross-border Water, shared by communities from two or more, largely periodic



OUTPUT LEVEL ACHIEVEMENT

- **836** ha emergency grass production sites (Ethiopia) prepared
- 19 strategic hay shade/store
- **>13,000 ha** rangeland rehabilitated
- 7 grass seed group (5 Kenya, 234 ha in Ethiopia)
- Conflict prevention platform



OUTPUT LEVEL ACHIEVEMENT

- **Six new technologies and 5 alternative livelihoods** introduced through PFS
- **463 groups** organised as income generating scheme/cooperative
- **Breeding groups** (Eth 178, Ken 3, Uga 12 Districts)



REGIONAL COORDINATION

- Cross-cutting studies (Livelihoods, mapping infrastructure for baseline and Inventory, stock routes)
- Infrastructure alignment along stock routes: 42 Water and Livestock Market
- Synchronized Vaccination
- Harmonization: Grading of live animal, Standard for meat; livestock market information system (LMIS)
- Regional strategies (SPS, Animal health, Rangelands,)
- Thematic Regional workshops (Camel, land governance, etc)



IMPACT LEVEL ACHIEVEMENTS

1. Reduced death rate of livestock kept by agro-pastoral and pastoral households (35% for cattle and 33.8% for goats)
2. Increased number livestock traded in selected markets in the project area by 17% for both cattle and goats.
3. Increased real value of livestock traded in selected markets by 18% for cattle and goats.
4. Reduced time lapse between early warning (information on pastoral risks) and response one month to 12 days (reduced by 63%).
5. Benefited **1,557,000** people (**267,000** Household), 40% of direct project beneficiaries are Women



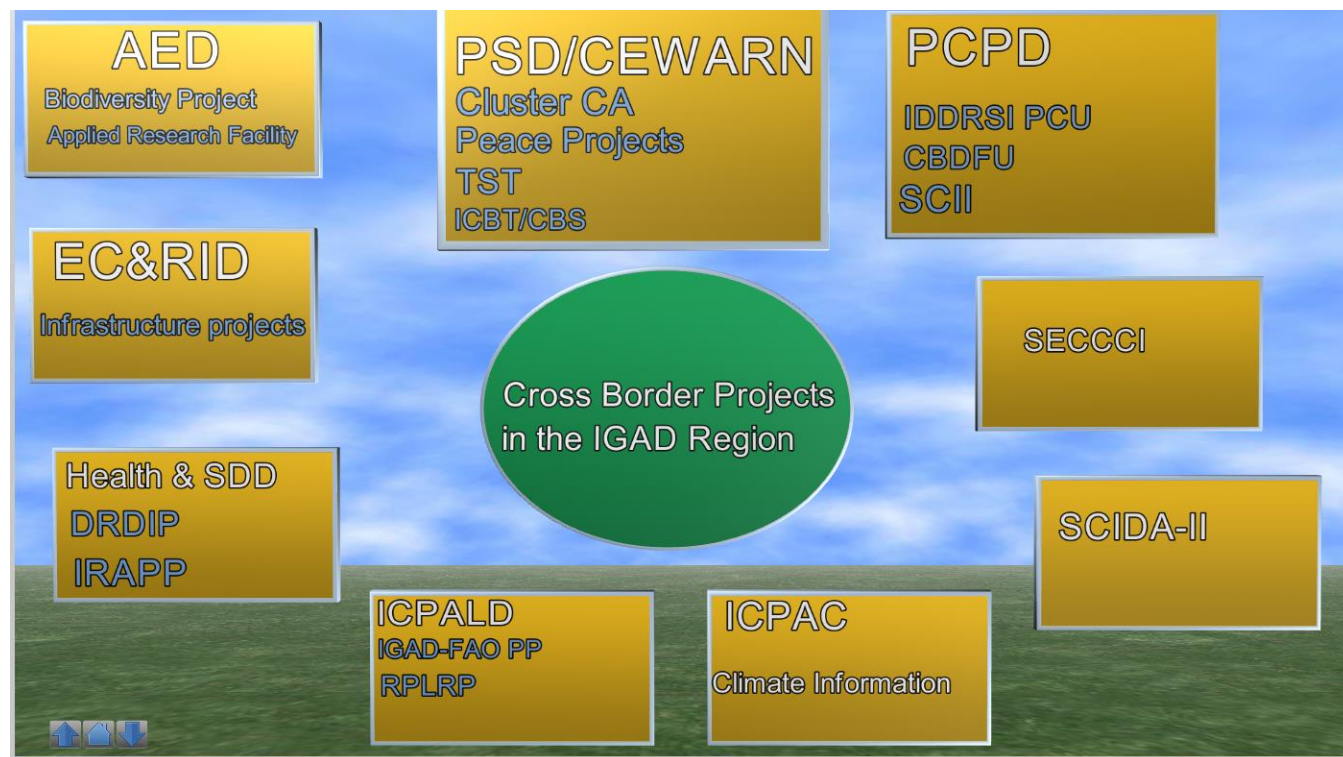
LESSONS AND MESSAGE

- Impact is visible where interventions are integrated (Water, health, forage, other livelihoods, social service).
Lesson for IBLI, GW, AfDB initiative
 - Value of regional coordination (cross-border infrastructure, harmonized TAD vaccination, policy frameworks, exchange and peer pressure)
 - Scale out/up resilience efforts: Ethiopia (42% HH, 21/200), Uganda (17% HH, 12/XX) and Kenya (<10% HH, 14/23)
 - Value chain strengthening: marketable supply of live animal is yet a problem (business planning, financial literacy, access to finance, de-risking, etc).
-



RECOMMENDATIONS FROM A TECHNICAL MEETING ON IGAD CROSS BORDER PROJECTS

1. Improved coordination of cross border projects within the IGAD region by putting in place a robust coordination mechanism.



RECOMMENDATION CONT'D

2. IGAD needs to develop a comprehensive guideline on cross border that include, delineation of cluster areas, modalities of working with local and national governments due to differences in standard operating procedures.
3. IGAD should develop an exit strategy for its cluster interventions in order to expand its coverage of the designated clusters and potential clusters in the region.

RECOMMENDATION CONT'D

4. The Regional coordination approach promoted by IGAD has demonstrated its merit and needs to be strengthened and scaled up.

5. Sustainability of projects: A number of regional projects implemented in the cross border areas have been completed and more are expected to end in the near future. Therefore, sustainability issues should be addressed in the project design, implementation and monitoring.

Thank You!!